



**RADIOLOGY SERVICES IN
THE CLOUD OPEN CLINIQUE
ANDRÉ RENARD TO
EXTERNAL COLLABORATION**

Clinique André Renard in Herstal, a medium-sized hospital with 160 beds and 800 employees, has chosen to implement the Dedalus RISONWEB/PACSONWEB Diagnostic/Archive solution.

“The fact that, as a hospital radiologist, you can entrust your activity to an external partner who supports and guides you from start to finish with infrastructure in the cloud is incredibly interesting and efficient.”

says Dr. Yılmaz Görür, head of Radiology at Clitique André Renard and the driving force behind the project.

A fresh wind is blowing through Clinique André Renard in Herstal, a medium-sized hospital with 160 beds and 800 employees. It is part of the university ELLIPSE LIEGE NETWORK, where eight hospitals in the province of Liège, among other things, exchange information and aim for collaboration between various services.



Towards a Cloud-Based Service Model

Since Dr. Görür took the lead, the Radiology department has established itself as a pioneer of an integrated RIS/PACS solution within a cloud-based service model. This would facilitate home radiology and the exchange of studies between the hospital and the four polyclinics of the organization, in an easy and reliable way. Dr. Görür wanted to move away from solutions based on a business model that was due for an update.

Through a radiologist friend, Dr. Görür became acquainted with the RISONWEB/PACSONWEB Diagnostic solution. What immediately appealed to him was the integrated approach to RIS/PACS. In the initial discussions with Dedalus, he was further attracted by the advantages of a cloud solution, including archiving.



“ The Benefits for Management Became Clear Quickly. The Choice is a Sweet Spot Where the Interests of Management, the IT Department, and Radiologists Aligned for the Future of the Hospital. ”

Dr. Görür, Head of Radiology





Complete RISONWEB/PACSONWEB Suite

Under his leadership and after consultation with the IT department, the management decided to switch to the complete RISONWEB/PACSONWEB/Archive suite. This involves purchasing all RISONWEB modules, including patient management, scheduling, imaging, and reporting. PACSONWEB Diagnostic in the Radiology and Nuclear Medicine departments would handle approximately 50,000 examinations per year, and the entire 65 TB DICOM archive would migrate to the PACSONWEB Archive cloud environment.

“ The benefits for management became clear quickly. The choice is a sweet spot where the interests of management, the IT department, and radiologists aligned for the future of the hospital. Most of the server park can be largely retained, and connectivity with the data from the Dedalus environment would be significantly faster. This should also lead to considerable improvements for teleradiology applications ”

says Dr. Görür.

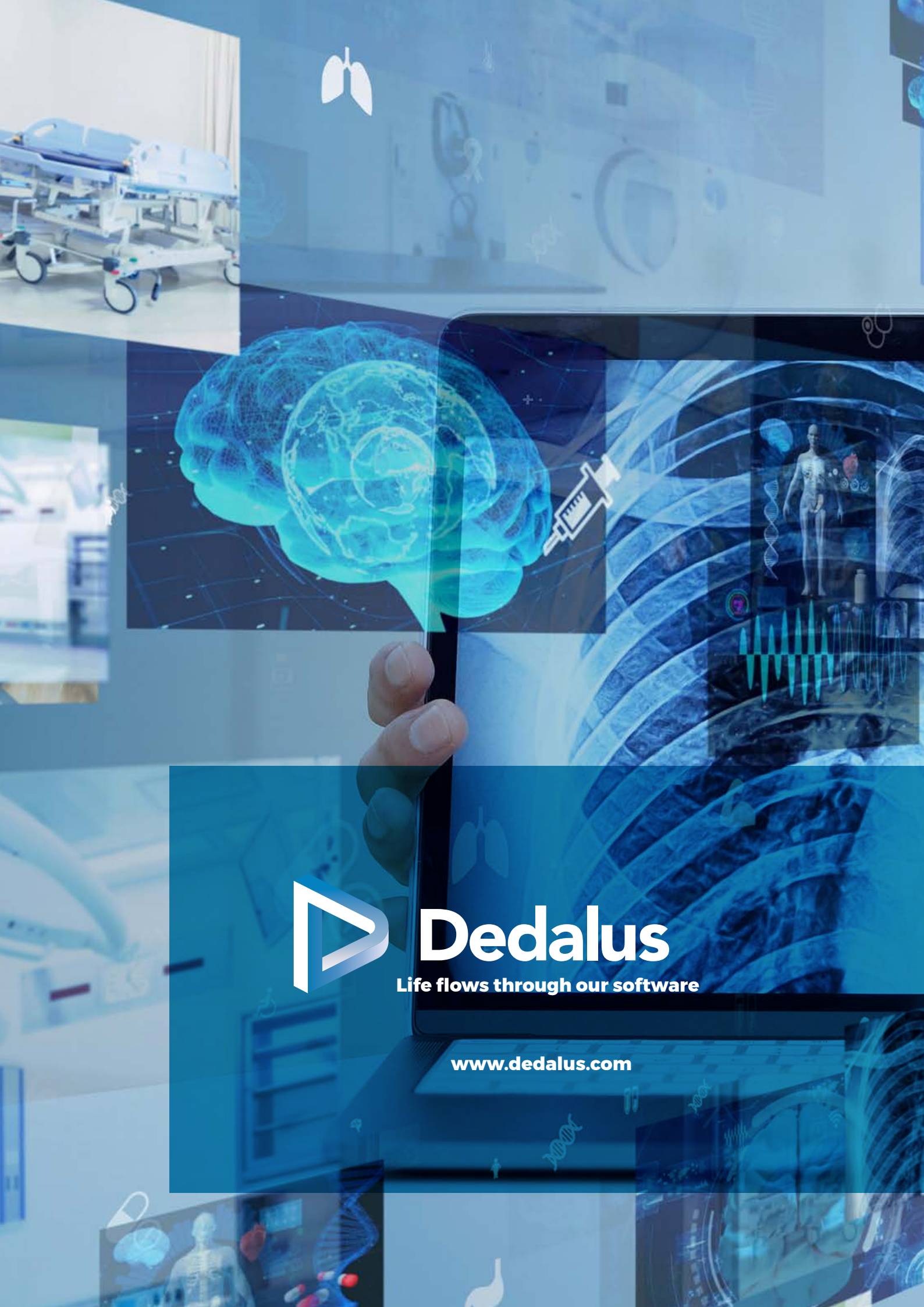
The new environment is expected to promote home reporting, collaboration, and sharing of studies with other hospitals in the network. Specific workflows could be created for AMI patients, MRI scans with other hospitals in the ELLIPSE network.

Valuable in Many Aspects

“ The new cloud environment is valuable for the hospital in many aspects ” confirms Dr. Görür.
“ We have an integrated RIS/PACS solution that is accessible from anywhere with proper security, and we will be able to easily share DICOM images, MRI and PET-CT modalities, and studies within the Liège network. The unique SaaS service model also comes with fixed, agreed rates for both user support and the compensation for the IT services we use, such as a fixed fee per GB of stored data. This way, the human and financial capacity of our IT department is not unnecessarily burdened. ”

For those interested in learning more about Dedalus solutions or wishing to see a short demonstration, our Regional Account Managers Stijn Rabaey [NL] or Stéphanie Wiart [FR] are always available.





Dedalus

Life flows through our software

www.dedalus.com